

FOLKLANDS



DARTNELL ROAD, ADDISCOMBE
GUIDE PRICE £350,000





Dartnell Road, Addiscombe

Approximate Gross Internal Area = 89.5 sq m / 963 sq ft

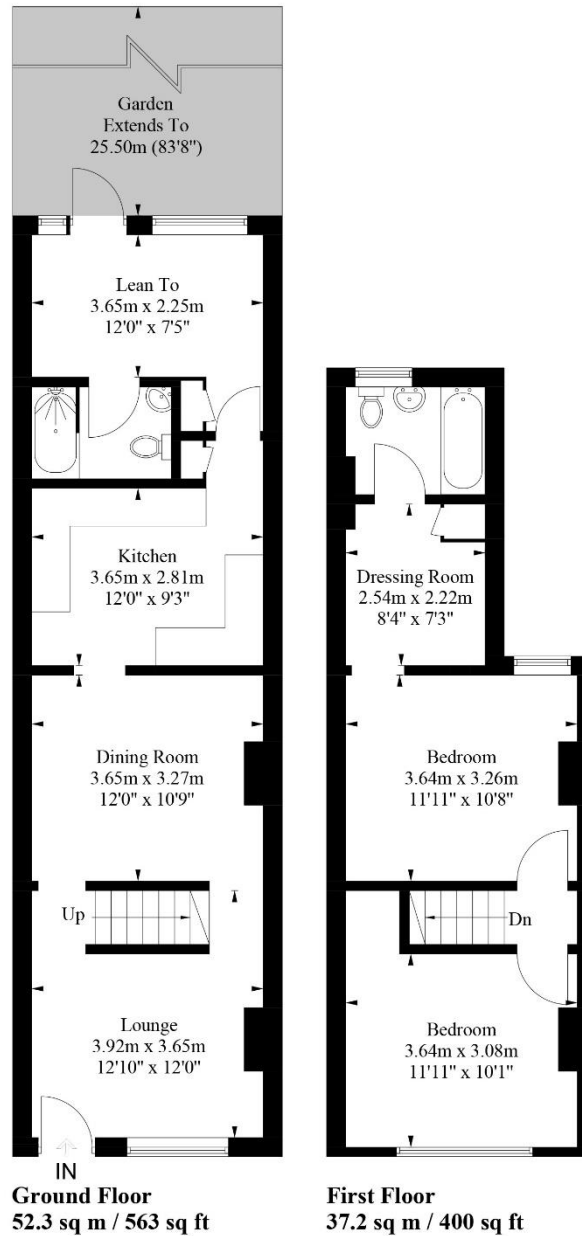


Illustration for identification purposes only, measurements are approximate, not to scale. floorplansUsketch.com © (ID757517)

INFO@FOLKLANDS.COM - 020 8686 0002

362 BRIGHTON ROAD - SOUTH CROYDON - CR2 6AL

- ❖ TWO DOUBLE BEDROOMS
- ❖ SEMI-DETACHED HOUSE
- ❖ REQUIRING A FULL REFURBISHMENT
- ❖ 83' SOUTH/WEST FACING GARDEN
- ❖ TWO BATHROOMS
- ❖ 0.4 MILES FROM THE LOCAL TRAM STOP
- ❖ 0.8 MILES FROM EAST CROYDON TRAIN STATION
- ❖ SCOPE TO LOFT EXTEND (STPP)
- ❖ CHAIN FREE
- ❖ EPC EER E



**** Renovation Required **** A two double bedroom semi-detached house situated within this popular residential area, conveniently located only 0.4 miles from the local tram stop and 0.8 miles from East Croydon train station.

Requiring a full refurbishment this spacious property offers scope to loft extend (stpp), boasts an 83' South/West facing rear garden, and already offers extended accommodation.

The accommodation comprises two double bedrooms, a dressing room, a three piece first floor bathroom, two reception rooms, an extended kitchen, a down-stairs shower room, and a lean-to extension with access to the private garden.

Furthermore, this property sits less than a mile from the popular Box Park complex and the plethora of shops on offer in Croydon town centre, along with being a short walk from Addiscombe high street which boasts a wide range of shops, cafes and supermarkets.

